



**TURKON**  
— LINE

*We Proudly Carry...*



## Contents

Introduction	2
<b>Standard Containers</b>	
Dry Van 20'	4
Dry Van 40'	6
Dry Van 40' HC	8
<b>Special Containers</b>	
Pallet Wide 40'	10
Pallet Wide 40' HC	12
Pallet Wide 45' HC	14
Open Top 20'	16
Open Top 40'	18
Open Top 40' HC	20
Flat Rack 40'	22
Reefer 40' HC	24

## Introduction

### 20' Containers

General purpose cargo containers; suitable mainly for heavy cargo with low volume.

### 40' and 45' Containers

General purpose cargo containers; suitable mainly for high volume cargo. Although these containers are in twice the length of 20' containers, their payload is not much different. There are options in this group for oversized cargo as Flat Rack and for perishable cargo as Reefer containers.

### Block Loads

Block loads are loads that are not evenly distributed along the entire length of the floor when stacking light loads and heavy loads into containers. Unlike flat pallets or platforms, special attention must be paid to ensure that block loads do not exceed the strength of the container's understructure. Care should be taken to use the necessary lashing materials to evenly distribute the weight of the load onto the container's substructure.

## Markings of Containers

ISO size and type codes are available on the containers.

## Internal and External Dimensions (according to ISO)

In the table below, internal, external and door opening dimensions for standard containers are specified in **height, width** and **length**.

Millimeter								
	Internal Dimensions			External Dimensions			Door Opening	
	H	W	L	H	W	L	H	W
20'DC	2393	2352	5898	2591	2438	6058	2280	2340
40'DC	2394	2350	12030	2591	2438	12192	2278	2341
40'HC	2698	2352	12032	2896	2438	12192	2585	2340
45'PWHC	2694	2444	13556	2896	2500	13716	2585	2416

Inch								
	Internal Dimensions			External Dimensions			Door Opening	
	H	W	L	H	W	L	H	W
20'DC	94,213	92,598	232,205	102,008	95,984	238,504	89,764	92,126
40'DC	94,252	92,520	473,622	102,008	95,984	480,000	89,685	92,165
40'HC	106,220	92,598	473,701	114,016	95,984	480,000	101,772	92,126
45'PWHC	106,063	96,220	533,701	114,016	98,425	540,000	101,772	95,118

## Tolerances of Internal Dimensions

The internal dimensions and door opening sizes of all Turkon Line containers comply with ISO standards. However, the dimensions indicated on this page are symbolic and may vary in measurement due to tolerances associated with production and container series. These tolerances are within (- / +) 10 mm.

\*This information represents only one example of the entire fleet.

## 20' Dry Van

ISO Code: 22G1



The following dimensions provided as an example, are the default values. Technical dimensions may vary on the basis of the container number. You can contact our customer representatives for exact values.

The specifications on the container door are to be considered accurate.

- Suitable for any general cargo.
- It is a standard 20' container with forklift pockets. For low volume heavy loads, this would be preferred option.
- Thanks to the forklift pockets, it is possible to handle the container with appropriate forklift equipment.
- With lashing rings located on both sides, on the upper and lower rails, on the door and front main carrier poles, it allows the loads to be fixed inside.
- Most of our containers are tested and certified for one door closed operation and their capacity is limited.
- Our containers are suitable to be equipped with Liner Bags to allow bulk cargoes to be loaded.
- The bottom of the container stands approximately (+/-) 170 mm from the ground.

Max Gross Weight	30480 kg	67196,952 lbs
Tare	2150 kg	4739,943 lbs
Maximum Payload	28330 kg	62457,010 lbs
Internal Volume	33,2 cbm	1172,447 cuft
Internal Height	2393 mm	94,126 inch
Internal Length	5898 mm	232,205 inch
Internal Width	2352 mm	92,598 inch
Internal Width Between Panels	-	-
Internal Width Between Rails	-	-
Door Height	2280 mm	89,764 inch
Door Width	2340 mm	92,165 inch

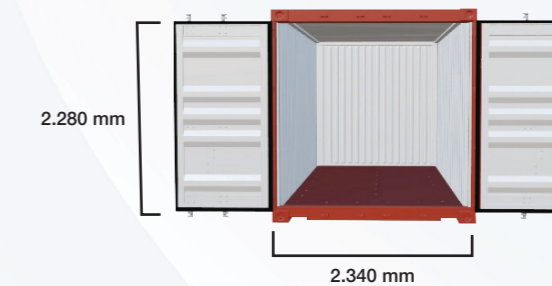
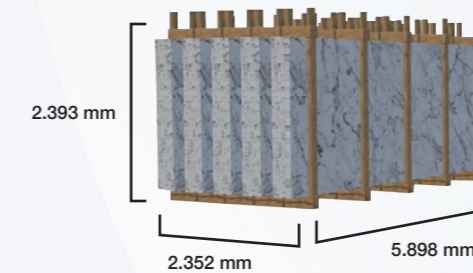
### BRIEF INFORMATION

6 lashing rings available on the lower and upper rails on both sides, and 3 lashing rings available on the door and front main carrier posts. The number of rings may differ per manufacturer

Ventilation holes are available.

1 lashing ring available at the junction of each corner casting and the upper rails, and an extra attachment point is provided for Transport rules should be checked for haulage.

The doors of the containers open 270 degrees, providing a more effective loading/unloading opportunity.



## 40' Dry Van

ISO Code: 42G1



The following dimensions provided as an example, are the default values. Technical dimensions may vary on the basis of the container number. You can contact our customer representatives for exact values.

The specifications on the container door are to be considered accurate.

- Suitable for any general cargo.
- Although the standard 40 container has a transport weight like a 20 container, its carrying capacity is higher in volume.
- With lashing rings located on both sides, on the upper and lower rails, on the door and front main carrier poles, it allows the loads to be fixed inside.
- Most of our containers are tested and certified for one door closed operation and their capacity is limited.
- Our containers are suitable to be equipped with Liner Bags to allow bulk cargoes to be loaded.
- The bottom of the container stands approximately (+/-) 170 mm from the ground.

Max Gross Weight	30480 kg	67196,952 lbs
Tare	3850 kg	8487,804 lbs
Maximum Payload	26630 kg	58709,148 lbs
Internal Volume	67,7 cbm	2390,803 cuft
Internal Height	2394 mm	94,252 inch
Internal Length	12030 mm	473,622 inch
Internal Width	2350 mm	92,520 inch
Internal Width Between Panels	-	-
Internal Width Between Rails	-	-
Door Height	2278 mm	89,685 inch
Door Width	2341 mm	92,165 inch

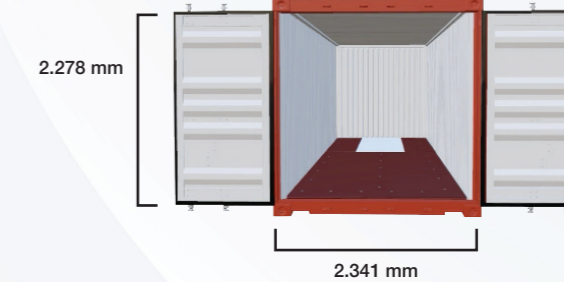
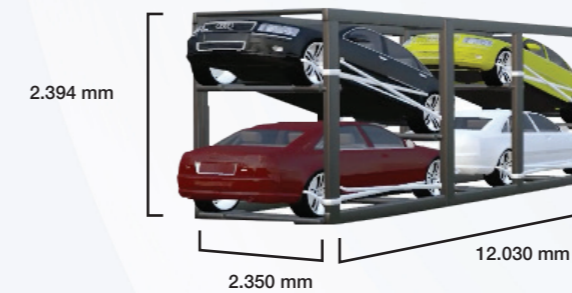
### BRIEF INFORMATION

10 lashing rings available on the lower and upper rails on both sides, and 2 lashing rings available on the door and front main carrier posts. The number of rings may differ per manufacturer

Ventilation holes are available.

1 lashing ring available at the junction of each corner casting and the upper rails, and an extra attachment point is available for Transport rules should be checked for haulage.

The doors of the containers open 270 degrees, providing a more effective loading/unloading opportunity.



## 40' Dry Van HC

ISO Code: 45G1



The following dimensions provided as an example, are the default values. Technical dimensions may vary on the basis of the container number. You can contact our customer representatives for exact values.

The specifications on the container door are to be considered accurate.

- Suitable for any general cargo.
- It is approximately 30 cm higher than the standard 40' container. Although the transport weight is as much as a 40' container, the carrying capacity is higher in volume.
- Suitable for higher volume loads.
- With lashing rings located on both sides, on the upper and lower rails, on the door and front main carrier poles, it allows the loads to be fixed inside.
- Most of our containers are tested and certified for one door closed operation and their capacity is limited.
- Our containers are suitable to be equipped with Liner Bags to allow bulk cargoes to be loaded.
- The bottom of the container stands approximately (+/-) 170 mm from the ground.
- Extra height should be considered for land transports.

Max Gross Weight	32500 kg	71650,294 lbs
Tare	3820 kg	8421,665 lbs
Maximum Payload	28680 kg	63228,628 lbs
Internal Volume	76,4 cbm	2698,041 cuft
Internal Height	2698 mm	106,220 inch
Internal Length	12032 mm	473,701 inch
Internal Width	2352 mm	92,598 inch
Internal Width Between Panels	-	-
Internal Width Between Rails	-	-
Door Height	2585 mm	101,772 inch
Door Width	2340 mm	92,126 inch

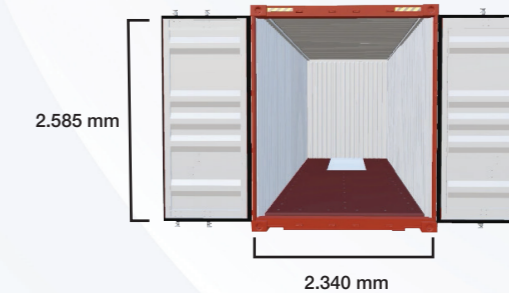
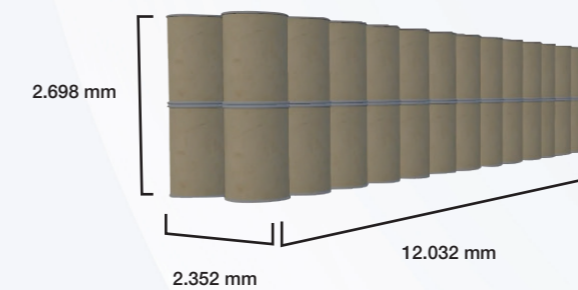
### BRIEF INFORMATION

There are 12 lashing rings on the lower and upper rails on both sides, and 3 lashing rings on the door and front main carrier posts. (The number of rings may differ per manufacturer)

Ventilation holes are available.

1 lashing ring available at the junction of each corner casting and the upper rails, and an extra attachment point is available for Transport rules should be checked for haulage

The doors of the containers open 270 degrees, providing a more effective loading/unloading opportunity.



## 40' Pallet Wide

ISO Code: 4CG1



The following dimensions provided as an example, are the default values. Technical dimensions may vary on the basis of the container number. You can contact our customer representatives for exact values.

The specifications on the container door are to be considered accurate.

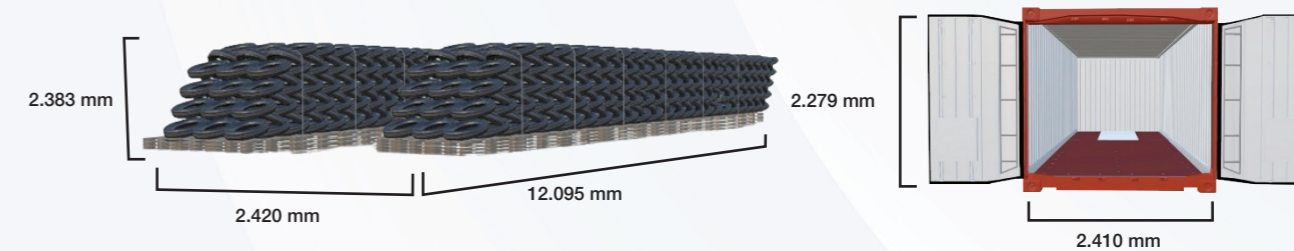
- Thanks to its specially designed side panels, it allows interior volume increase and two Euro pallets can be loaded side by side.
- Comparing to standard 40' container, more pallets can be loaded into this unit and also by using forklift.
- It would allow loading without the need for safety and stacking materials, by reducing the unused space so the possibility of damage.
- Easy loading/unloading with door opening with of 2.41m.
- Thanks to its internal width being 70mm wider than the standard ISO container, it allows efficient side-by-side loading of pallets.
- The bottom of the container stands approximately (+/-) 170 mm from the ground.

Max Gross Weight	34000 kg	74957,230 lbs
Tare	4200 kg	9259,423 lbs
Maximum Payload	29800 kg	65697,808 lbs
Internal Volume	69,8 cbm	2464,964 cuft
Internal Height	2383 mm	93,819 inch
Internal Length	12095 mm	476,181 inch
Internal Width	2420 mm	95,276 inch
Internal Width Between Panels	2422 mm	95,354 inch
Internal Width Between Rails	2420 mm	95,276 inch
Door Height	2279 mm	89.724 inch
Door Width	2410 mm	94,882 inch

### BRIEF INFORMATION

Ventilation holes are available.

The doors of the containers open 270 degrees, providing a more effective loading/unloading opportunity.



## 40' Pallet Wide HC

ISO Code: 4FG1



The following dimensions provided as an example, are the default values. Technical dimensions may vary on the basis of the container number. You can contact our customer representatives for exact values.

The specifications on the container door are to be considered accurate.

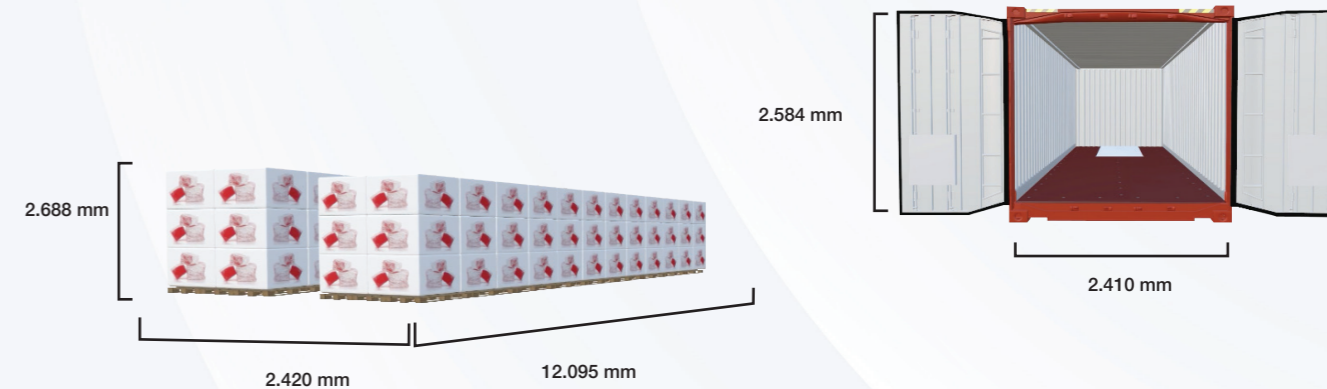
- Thanks to its specially designed side panels, it allows interior volume increase and two Euro pallets can be loaded side by side.
- Comparing to standard 40' container, more pallets can be loaded into this unit and also by using forklift.
- It would allow loading without the need for safety and stacking materials, by reducing the unused space so the possibility of damage.
- Easy loading/unloading with door opening with of 2.41m
- Thanks to its internal width being 70mm wider than the standard ISO container, it allows efficient side-by-side loading of pallets.
- As it is 30cm higher than standard 40' Pallet Wide container, it offers more volume.
- The bottom of the container stands approximately (+/-) 170 mm from the ground.
- Extra height should be considered for land transports.

Max Gross Weight	34000 kg	74957,230 lbs
Tare	4400 kg	9700,347 lbs
Maximum Payload / Cargo Allowance	29600 kg	65256,883 lbs
Internal Volume	78,7 cbm	2779,264 cuft
Internal Height	2688 mm	105,827 inch
Internal Length	12095 mm	476,181 inch
Internal Width	2420 mm	95,276 inch
Internal Width Between Panels	2422 mm	95,354 inch
Internal Width Between Rails	2420 mm	95,276 inch
Door Height	2584 mm	101,732 inch
Door Width	2410 mm	94,882 inch

### BRIEF INFORMATION

Ventilation holes are available.

The doors of the containers open 270 degrees, providing a more effective loading/unloading opportunity.





## 45' Pallet Wide HC

ISO Code: LEG1, LEGB



The following dimensions provided as an example, are the default values. Technical dimensions may vary on the basis of the container number. You can contact our customer representatives for exact values.

The specifications on the container door are to be considered accurate.

- Suitable for higher volume loads.
- Comparing to standard 40' container more pallets can be loaded into this unit and also by using forklift.
- Its specially designed side panels, it allows to increase the interior volume and to load two Euro pallets side by side.
- The bottom of the container stands approximately (+/-) 170 mm from the ground.
- Extra height should be considered for land transports.

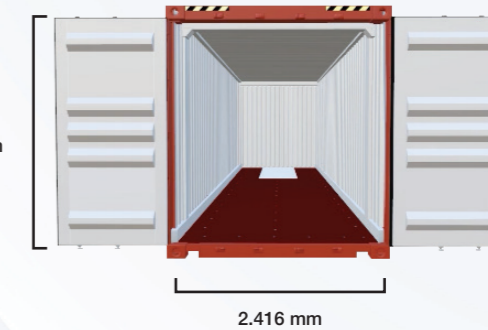
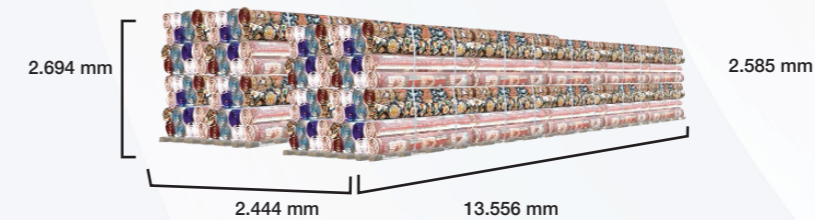
Max Gross Weight	34000 kg	74957,230 lbs
Tare	4750 kg	10471,966 lbs
Maximum Payload / Cargo Allowance	29250 kg	64485,264 lbs
Internal Volume	89,2 cbm	3150,068 cuft
Internal Height	2694 mm	106,063 inch
Internal Length	13556 mm	533,701 inch
Internal Width	2444 mm	96,220 inch
Internal Width Between Panels	-	-
Internal Width Between Rails	-	-
Door Height	2585 mm	101,772 inch
Door Width	2416 mm	95,118 inch

### BRIEF INFORMATION

12 lashing rings available on the lower and upper rails on both sides, and 3 lashing rings available on the door and front main carrier posts. (The quantities may vary depending on the container.)

Ventilation holes are available.

The doors of the containers open 270 degrees, providing a more effective loading/unloading opportunity.



## 20' Open Top

ISO Code: 22U1



The following dimensions provided as an example, are the default values. Technical dimensions may vary on the basis of the container number. You can contact our customer representatives for exact values.

The specifications on the container door are to be considered accurate.

- It is specially designed for loads too high and heavy to fit into standard containers.
- The upper frame of the door allows for disassembly and assembly on both sides.
- Standard 20' container with forklift pockets. Thanks to forklift pockets, it may be handled by appropriate forklift equipment.
- Rope loops are available on the outside of the upper rails to secure the tarps.
- We can provide disposable overflow canvas in line with your demands for your overflow loading.
- The bottom of the container stands approximately (+/-) 170 mm from the ground.
- The lashing rings on the top and bottom rails, door and front main carrier posts on both sides allow to fasten the cargo.

Max Gross Weight	30480 kg	67196,952 lbs
Tare	2350 kg	5180,867 lbs
Maximum Payload / Cargo Allowance	28180 kg	62016,085 lbs
Internal Volume	32,8 cbm	1158,321 cuft
Internal Height	2367 mm	93,189 inch
Internal Length	5897 mm	232,165 inch
Internal Width	2350 mm	92,520 inch
Internal Width Between Panels	-	-
Internal Width Between Rails	-	-
Door Height	2277 mm	89,646 inch
Door Width	2338 mm	92,047 inch
Ceiling Opening Length	5757 mm	226,654 inch
Ceiling Opening Width	2190 mm	86,220 inch

### BRIEF INFORMATION

The doors of the containers open 270 degrees, providing a more effective loading/unloading opportunity.



## 40' Open Top

ISO Code: 42U1



The following dimensions provided as an example, are the default values. Technical dimensions may vary on the basis of the container number. You can contact our customer representatives for exact values.

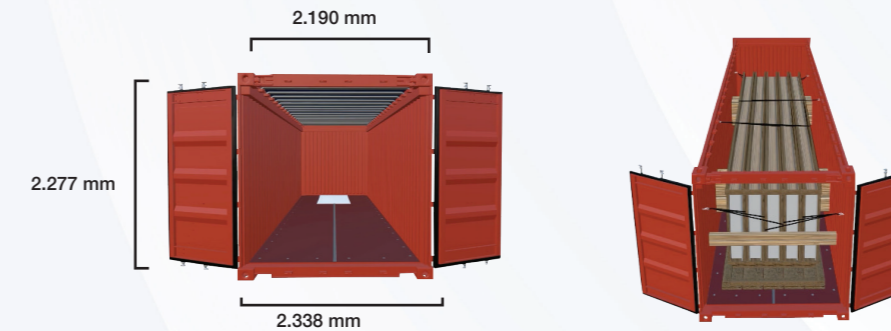
The specifications on the container door are to be considered accurate.

- It is specially designed for loads that are too high and heavy to fit in standard containers.
- Although the transport weight of a 40 open top container is lower than a 20 open top container, its carrying capacity is higher in terms of volume.
- The upper frame of the door allows for disassembly and assembly on both sides.
- Rope loops are available on the outside of the upper rails to secure the canvas.
- We can provide disposable overflow canvas in line with your demands for your overflow loading.
- The bottom of the container stands approximately (+/-) 170 mm from the ground.
- The lashing rings on the top and bottom rails, door and front main carrier posts on both sides allow to fasten the cargo.

Max Gross Weight	30480 kg	67858,340 lbs
Tare	4150 kg	9149,191 lbs
Maximum Payload / Cargo Allowance	26630 kg	58709,148 lbs
Internal Volume	66,9 cbm	2362,551 cuft
Internal Height	2367 mm	93,189 inch
Internal Length	12030 mm	473,622 inch
Internal Width	2350 mm	92,520 inch
Internal Width Between Panels	-	-
Internal Width Between Rails	-	-
Door Height	2277 mm	89,646 inch
Door Width	2338 mm	92,047 inch
Ceiling Opening Length	11871 mm	467,362 inch
Ceiling Opening Width	2190 mm	86,220 inch

### BRIEF INFORMATION

The doors of the containers open 270 degrees, providing a more effective loading/unloading opportunity.



## 40' Open Top HC

ISO Code: 45U1



The following dimensions provided as an example, are the default values. Technical dimensions may vary on the basis of the container number. You can contact our customer representatives for exact values.

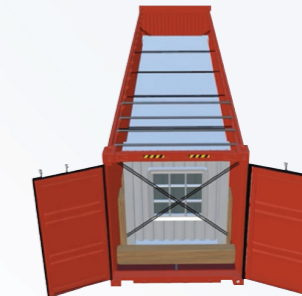
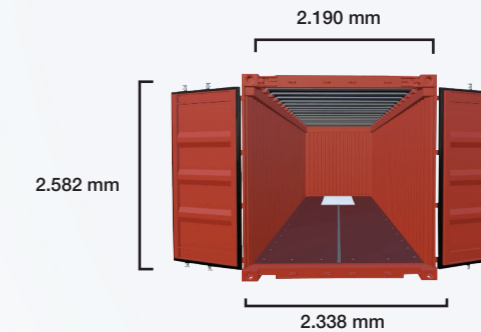
The specifications on the container door are to be considered accurate.

- It is specially designed for loads that are too high and heavy to fit in standard containers.
- Due to being approximately 30 cm taller than a standard 40-foot open-top container, it can be used for taller loads.
- The upper door header allows the removal and installation of the header from both sides.
- Rope rings are located outside the upper rails to secure the canvas.
- For overflow loading, we can provide disposable overflow canvas according to your requests.
- The bottom of the container stands approximately (+/-) 170 mm from the ground.
- Lashing rings on both upper and lower rails on each side, as well as on the door and front corner posts, allow to fasten the cargo.

Max Gross Weight	30480 kg	67196,952 lbs
Tare	4300 kg	9479,885 lbs
Maximum Payload / Cargo Allowance	26180 kg	57717,067 lbs
Internal Volume	75,5 cbm	2666,257 cuft
Internal Height	2672 mm	105,197 inch
Internal Length	12030 mm	473,622 inch
Internal Width	2350 mm	92,520 inch
Internal Width Between Panels	-	-
Internal Width Between Rails	-	-
Door Height	2582 mm	101,654 inch
Door Width	2338 mm	92,047 inch
Ceiling Opening Length	11871 mm	467,362 inch
Ceiling Opening Width	2190 mm	86,220 inch
Length Between Posts	-	-
Width Between Posts	-	-
Platform Length	-	-
Platform Width	-	-

### BRIEF INFORMATION

The doors of the containers open 270 degrees, allowing more effective loading/unloading.



## 40' Flat Rack

ISO Code: 42P3



The following dimensions provided as an example, are the default values. Technical dimensions may vary on the basis of the container number. You can contact our customer representatives for exact values.

The specifications on the Flat Rack are to be considered accurate.

- It is specially designed for loads that are too tall, wide, or heavy to fit into standard containers.
- The 40-foot Flat Rack container does not have roof and side panels. It can also be preferred for heavy loads that can be loaded from the side and top.
- Additionally, thanks to its foldable front and rear ends, it can be used as a platform.
- Equipped with forklift pockets which provide possibility of handling with forklift only when empty.
- It is specially designed for loads that are too tall, wide, or heavy to fit into standard containers.
- Cargo should be positioned on the flat rack to ensure suitable weight distribution and fastened with appropriate lashing materials to avoid any movement.
- It is not appropriate modifying flat rack structure in any way including welding and drilling holes.

Max Gross Weight	45000 kg	99186,053 lbs
Tare	4990 kg	11001,076 lbs
Maximum Payload / Cargo Allowance	40010 kg	88207,023 lbs
Internal Volume	-	-
Internal Height	1960 mm	102,008 inch
Internal Length	-	-
Internal Width	-	-
Internal Width Between Panels	-	-
Internal Width Between Rails	-	-
Door Height	-	-
Door Width	-	-
Ceiling Opening Length	-	-
Ceiling Opening Width	-	-
Length Between Posts	11686 mm	77,165 inch
Width Between Posts	2116 mm	83,307 inch
Platform Length	12.192 mm	480,000 inch
Platform Width	2438 mm	95,984 inch



## 40' Reefer

ISO Code: 45R1



The following dimensions provided as an example, are the default values. Technical dimensions may vary on the basis of the container number. You can contact our customer representatives for exact values.

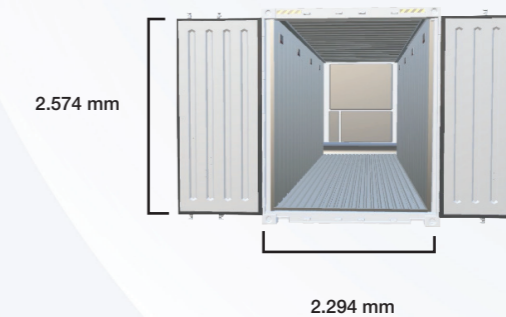
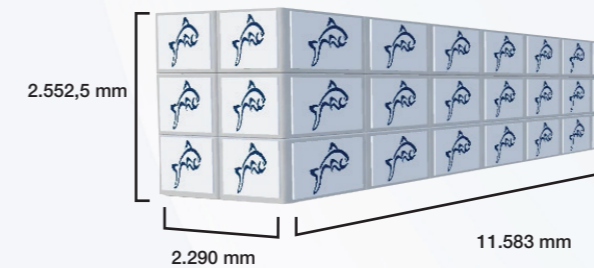
The specifications on the container door are considered accurate.

- 40' reefer container is designed to transport temperature-sensitive cargo at precise temperatures.
- It has an aluminum inner panel structure suitable for carrying many products.
- The floor is T-shaped and distributes the airflow below the cargo unobstructed. Together with inner panel design, this provides maximum space for cargo.
- It provides balanced cooling of the ambient air and cargo with symmetrical under floor airflow.
- It has a dehumidification function which can lower the level of moisture in the air. The standard is between 60% and 95% relative humidity (RH) and may differ from container to container depending on the year of construction and manufacturer.
- The ventilation setting allows it to be set as a percentage or as a CFM/CMH value, which means cubic meters per minute or cubic meters per hour, respectively. It allows fresh air to be taken into the environment from outside at the specified setting.
- Before loading, containers are subjected to a pre-trip inspection (PTI) process where cooling and heating performances are observed.
- There are red lines inside the container showing the maximum storage height. to ensure proper airflow Care should be taken not to exceed the line and uninterrupted block loading should be avoided.

Max Gross Weight	34000 kg	74957,230 lbs
Tare	4720 kg	10405,827 lbs
Maximum Payload / Cargo Allowance	29280 kg	64551,403 lbs
Internal Volume	67,7 cbm	2390,803 cuft
Internal Height	2552 mm	100,492 inch
Internal Length	11583 mm	456,024 inch
Internal Width	2290 mm	90,157 inch
Internal Width Between Panels	-	-
Internal Width Between Rails	-	-
Door Height	2574 mm	101,339 inch
Door Width	2294 mm	90,315 inch

### BRIEF INFORMATION

The doors of the containers open 270 degrees, providing a more effective loading/unloading opportunity.





**TURKON**  
LINE

Turkon Konteyner Taşımacılık ve Denizcilik A.Ş.  
Head Office: Altunizade Mah., Ord. Prof. Dr. Fahrettin  
Kerim Gökay Cad. No: 33, Üsküdar / İstanbul  
T: +90 (216) 544 18 00 info@turkon.com



www.turkon.com